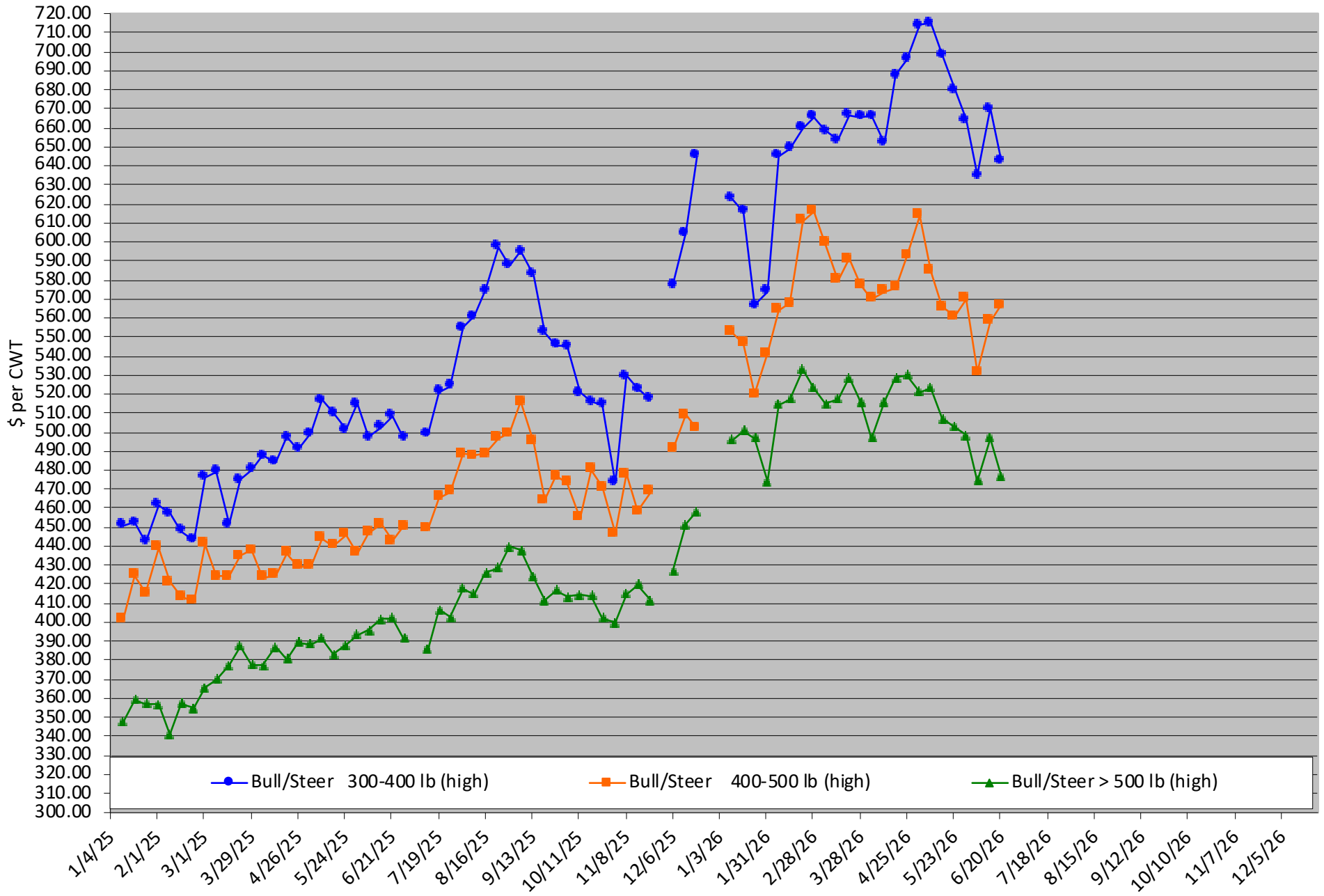


Calf Price Trends

Trend of the Highest Price Reported for Various Weight Calves, Average of 6 East & Central Texas Livestock Auctions

Chart created by Dr. Jason Banta, Extension Beef Cattle Specialist

For a weekly email copy of this chart please email amsensing@ag.tamu.edu or contact a Texas A&M AgriLife County Extension Agent

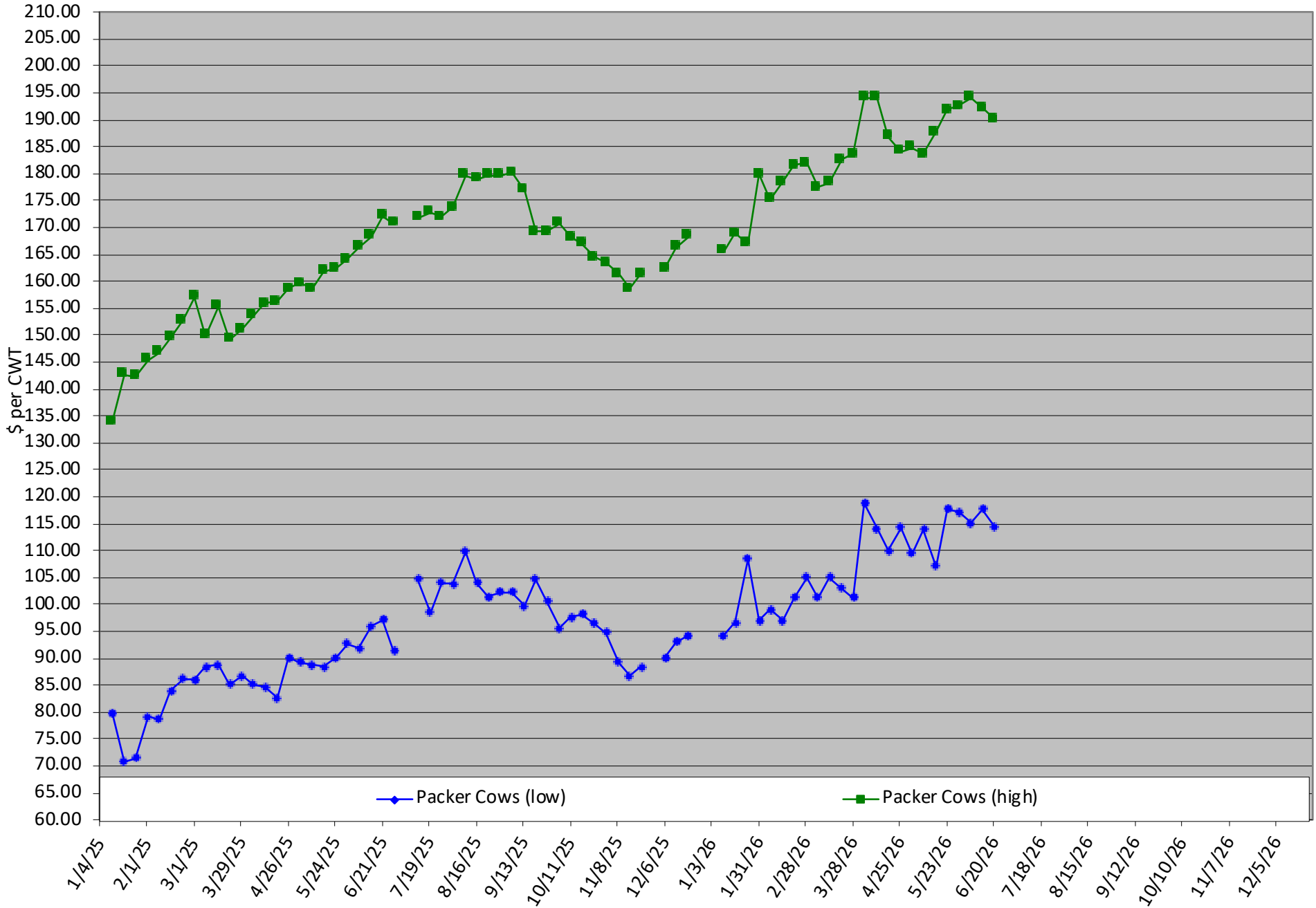


Packer Cow PriceTrends

Trend of High and Low Prices Reported for Packer Cows, Average of 6 East & Central Texas Livestock Auctions

Chart created by Dr. Jason Banta, Extension Beef Cattle Specialist

For a weekly email copy of this chart please email amsensing@ag.tamu.edu or contact a Texas A&M AgriLife County Extension Agent



AG IN THE EVENING

2026 virtual Zoom Educational Series programs brought to you by the Extension offices of Houston & Gregg Counties

ALL PROGRAMS START AT 6 PM

To register, click the TITLE of each program or scan QR Code

**April 14: Dr. Vanessa Corriher-Olson
Fertilizer \$\$\$ Now What??**



**May 12: Dr. Jason Banta
Grazing Strategies & Stocking Rate
Considerations**



**June 9: Dr. Vanessa Corriher-Olson
Drought Management**



**July 14: Dr. Jason Banta
Heifer Selection & Development**



**Previous recordings
available by clicking photo**



Educational programs of the Texas A&M AgriLife Extension Service are open to all people without regard to race, color, sex, disability, religion, age, or national origin, genetic information or veteran status. The Texas A&M University System, U.S. Department of Agriculture, and the County Commissioners Courts of Texas Cooperating. Anyone needing special assistance at an Extension Program should contact the Texas A&M AgriLife Extension Office at 936.544.7502 at least one week prior to the program or event.

Last month's Regional Roundup (agproud.com/articles/59224) discussed feed additive options to aid in horn fly control and some differences among horn, stable and house flies. This month's roundup will focus on topical insecticide options and considerations to help control horn flies.

Topical insecticides can be applied to cattle using several different methods including eartags, pour-ons, sprays, rubs, dust bags and even a gel cap applicator. When selecting methods, consider how easy the cattle are to gather, how long the application may last, chemical classes available for an application method, cost and any other factors important to the operation.

To help slow horn fly resistance and improve efficacy of topical products, it is important to rotate chemical classes of active ingredients. Changing brands or application methods may or may not result in actually rotating chemical classes. Chemical classes of topical products include pyrethroids, organophosphates, macrocyclic lactones and insect growth regulators. Below is a list of some active ingredients that fall into the two chemical classes with the most products.

- *Pyrethroids*: Cyfluthrin, permethrin, zeta-cypermethrin, lambda-cyhalothrin, gamma-cyhalothrin

- *Organophosphates*: Coumaphos, phosmet, diazinon, tetrachlorvinphos

Recommendations for rotation schedules vary. In southern climates or areas with a longer horn fly season, consider rotating chemical classes halfway through the season or every 90 days. In areas with a shorter horn fly season, rotating chemical classes each year may be appropriate.

Piperonyl butoxide is added to some eartags, pour-ons and other products. It inhibits the breakdown of pesticides by insects, resulting in improved product efficacy. Piperonyl butoxide can also be purchased and mixed in solutions to use with sprays and rubs.

If it is not easy to gather cattle, insecticide eartags might be a good option, as they slowly release insecticide over a longer period.

Looking at the active ingredient can simplify product selection. There are many pour-on products available that all contain the active ingredient permethrin in either a 1%, 5%, 7.4% or 10% concentration. Application rates of these pour-on products will vary based on concentration so that regardless of concentration, the same amount of active ingredient is applied to each animal. Animal coverage will be greater with the more dilute products.

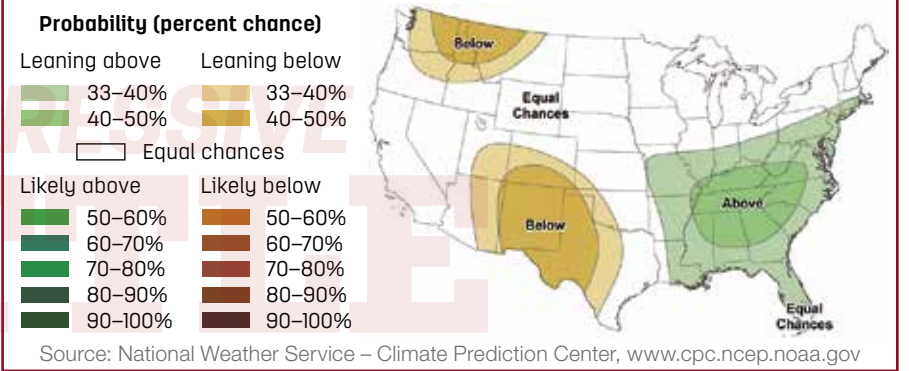
Rubs and dust bags can be used without gathering cattle. Effectiveness will vary depending on if and how frequently the cattle use these devices.



Jason Banta
Associate Professor and
Extension Beef Cattle
Specialist
Texas A&M University
jpbanta@ag.tamu.edu

From a Beef Quality Assurance (BQA) standpoint, vegetable or mineral oil should be mixed with insecticides instead of diesel for application.

0-to-3-month precipitation outlook as of March 21, 2024



THE GRASS ISN'T ALWAYS GREENER,

BUT WHEN IT IS...

VITAFERM STILL DELIVERS.

VitaFerm® is a line of nutritional supplements for beef cattle that maximize energy and forage utilization for successful production. To learn more or find your local dealer, visit www.vitaferm.com.

VITAFERM PERFORMANCE THAT PAYS

BIOZYME